



PTH

COMFORTABLE AND SAFE FOR HORSE AND RIDER



Anssems HORSE TRAILERS PTH

LOW LOADER TRAILERS



FLATBED TRAILERS



MULTIPURPOSE TRAILERS



CAR TRANSPORTERS



TIPPING TRAILERS



HARD TOP COVER TRAILERS



BOX VAN TRAILERS



HORSE TRAILERS



WELFARE TRAILERS



Unique full polyester quality, 100% woodfree!

Anssems produces its own high-quality polyester with a smooth surface and a gloss level of almost 98% in its factory. Our horse trailers are coated with a special gelcoat which ensures an extremely high UV resistance. This has the advantage of preventing the colour from fading and the trailer from heating up too quickly in the sun. Additionally, the trailer is very easy to clean.

**“THE ANSSEMS PTH
IS SUSTAINABLE AND
100% WOOD-FREE”**



PTH Privaro
tandem black



PTH Excelente
tandem white or black
(with tack room)



PTH Ganador
tandem black
(with tack room)

Unique materials

Materials used for Anssems horse trailers are those also used in the aircraft industry and in the construction of windmills. These materials have a low net weight, are incredibly strong and are specially designed for long-term pressure loading. The whole trailer is 100% wood-free, preventing it from rotting, and thus guaranteeing a long life.



Robust outside railing



Reliable and highly visible lighting



Large tack room, also for western saddles



Special breast bar release system



Top hung windows on both sides



Self rollable ventilated windstop

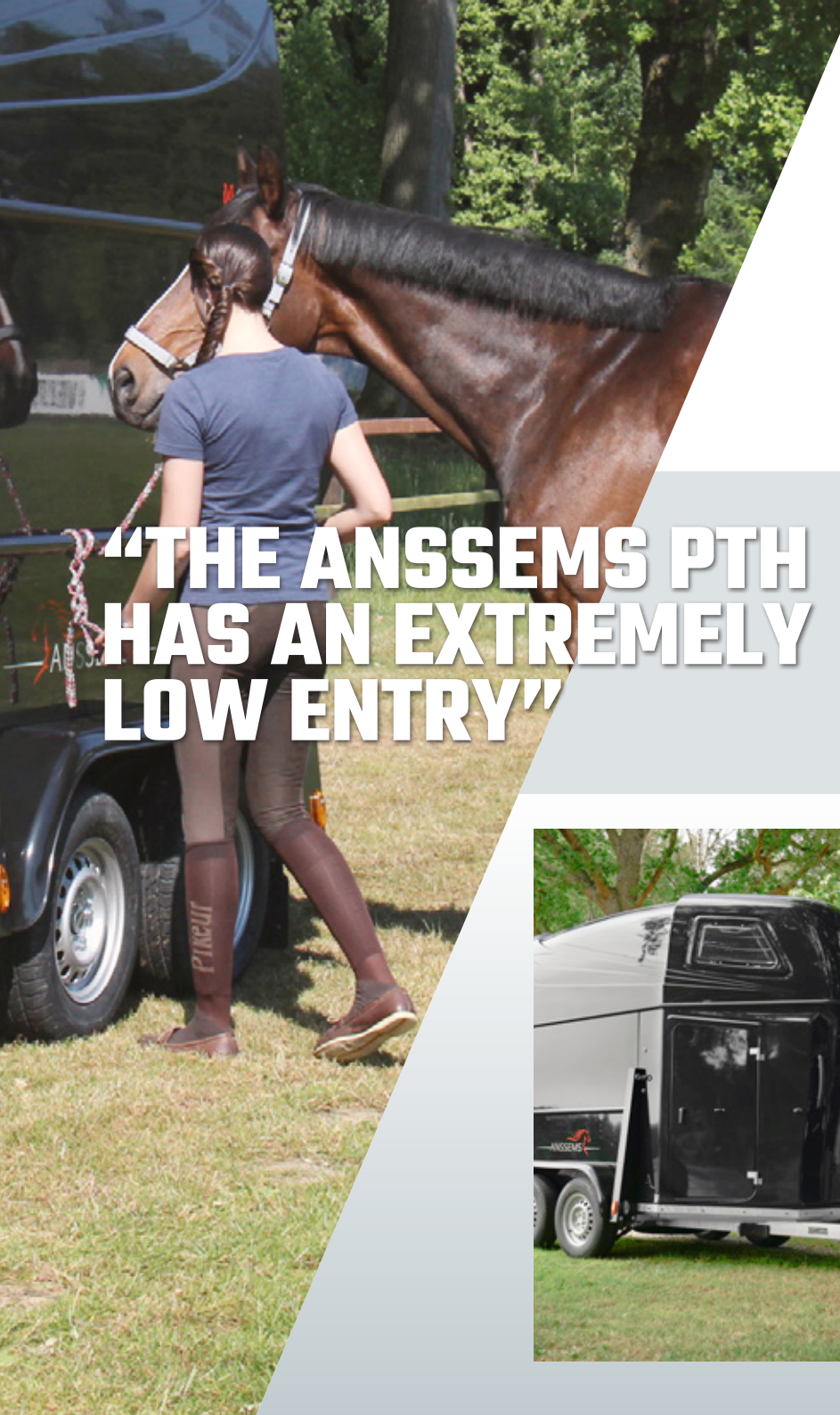


Very low entrance



Also available with alloy wheels

Anssems



Aerodynamic design

The revolutionary aerodynamic design minimises wind and driving noise. Combined with optimal roadholding, it guarantees a stress-free and comfortable transport for your horses. Another important aspect is the significant reduction in fuel consumption, thanks to the unique design.

**“THE ANSSEMS PTH
HAS AN EXTREMELY
LOW ENTRY”**



Privaro

2-Horse trailer equipped with:

- Unique full-polyester quality
- Extremely low entry
- Robust robot welded and hot dip galvanised chassis
- Robust rods on the outside
- Breast bar release system and maneuverhandle
- Side kick protection and large wall cushions
- Total weight: 2000 kg
- Unloaden trailer weight: 750 kg

- Colour:



Excelente

Equipped as the Privaro with the extras below:

- Spacious tack locker / spacious saddle
- Locker interior lighting
- Halter holders and saddle carriers
- Total weight: 2000 kg
- Unloaden trailer weight: 775 kg

- Colour:





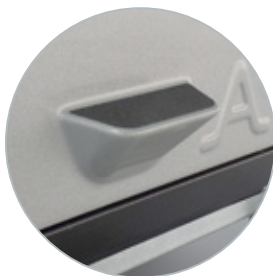
Breast bar
release system



Non-blinding
interior lighting



Large side pads
(premium quality)



Non-slip step



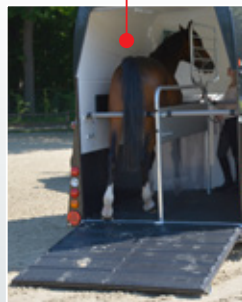
Head grid
(option)



Foal grid
(option)



Spare wheel
(option)



Ganador

Equipped as the Excelente plus :

- Extra security through contour lighting (LED), 3rd brake light (LED)
- Sparewheel with support
- Axle shock absorbers for extra driving comfort
- Total weight: 2300 kg
- Unloaden trailer weight: 850 kg

- Colour:



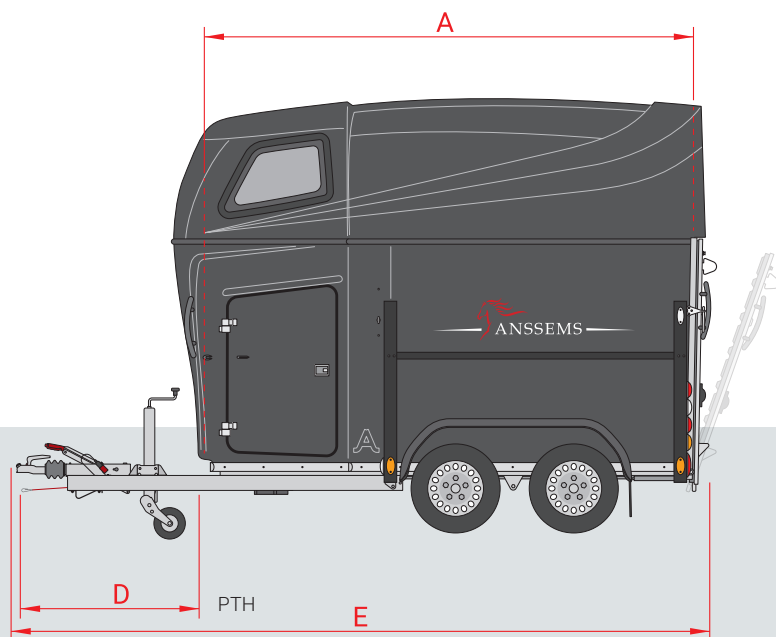
Anssems



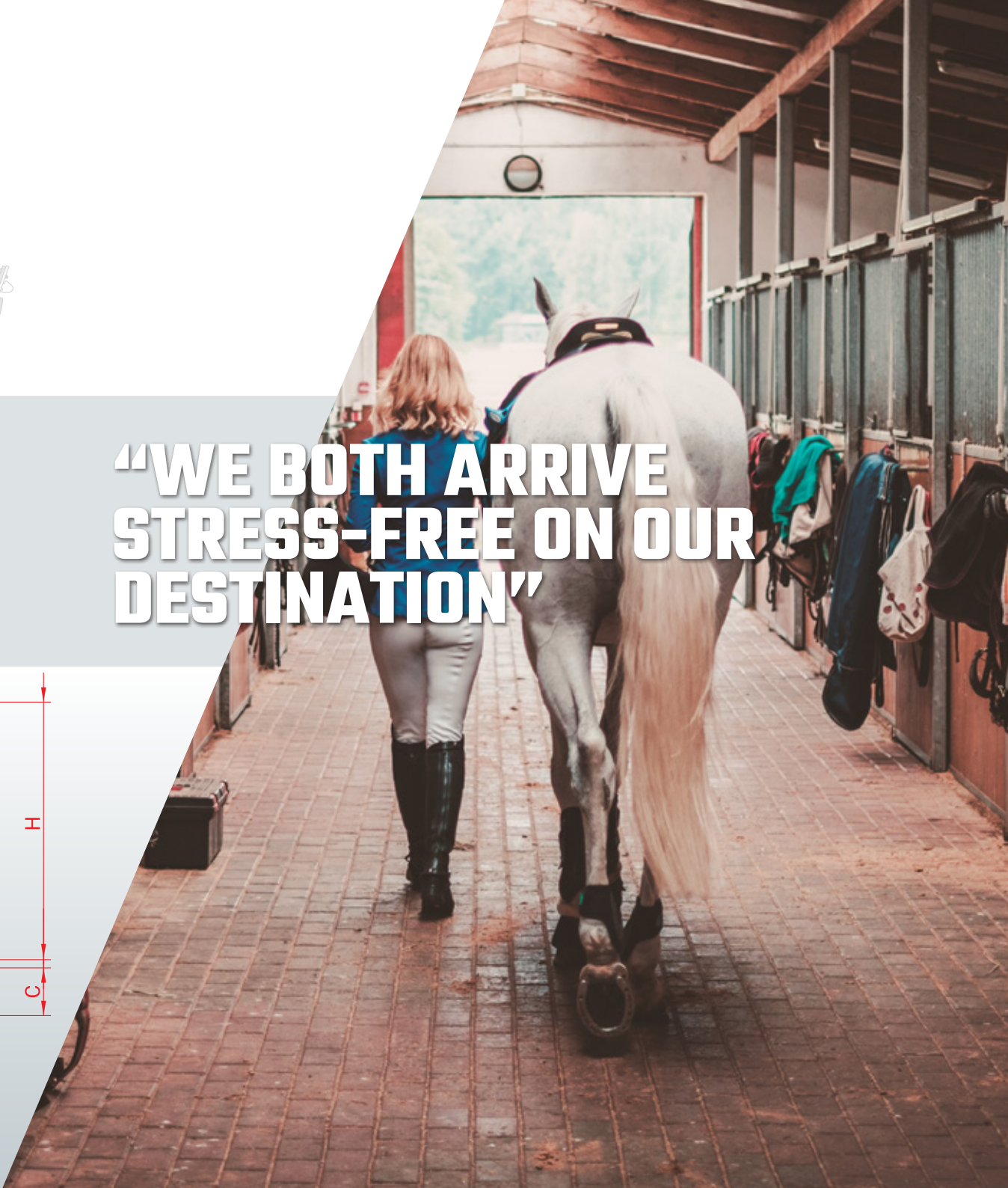
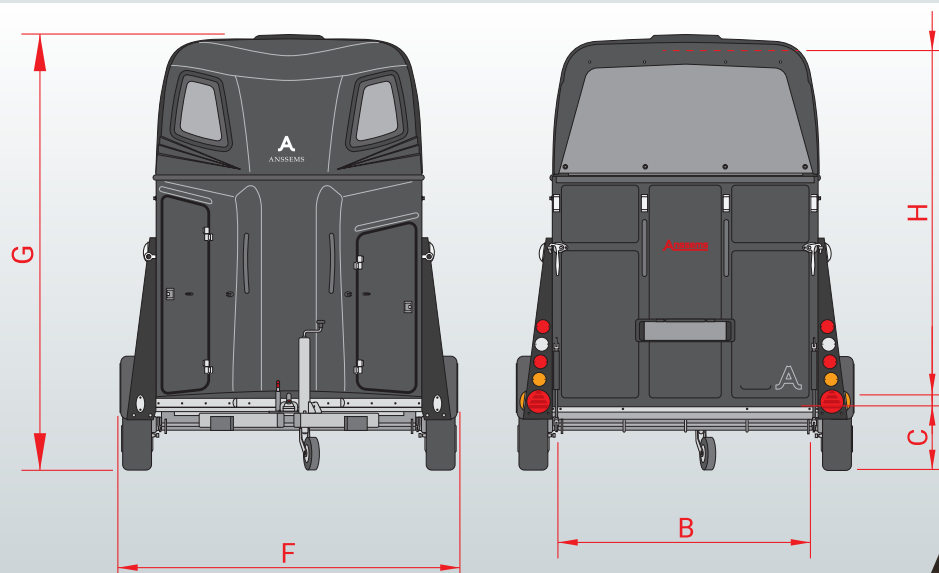
| Type | PTH 2000 Privaro | PTH 2000 Excelente | PTH 2000 Excelente | PTH 2300 Ganador |
|------------------------|------------------|--------------------|--------------------|------------------|
| Gross capacity | 2000 kg | 2000 kg | 2000 kg | 2300 kg |
| Unladen trailer weight | 750 kg | 775 kg | 775 kg | 850 kg |
| Load capacity | 1250 kg | 1225 kg | 1225 kg | 1450 kg |
| Axles pcs | 2 | 2 | 2 | 2 |
| Braked version | v | v | v | v |
| Tack room | x | v | v | v |
| Roof colour | metallic black | white | metallic black | metallic black |
| Side colour | metallic black | white | metallic black | metallic black |
| Wheel / tyresize | 155R13 | 185/70R13 | 185/70R13 | 195/70R14 |
| Rims | steel | steel | steel | steel |
| Floor type | polyester | polyester | polyester | polyester |
| Internal length (A) | 331 cm | 331 cm | 331 cm | 331 cm |
| Internal width (B) | 166 cm | 166 cm | 166 cm | 166 cm |
| Floor height (C) | 35 cm | 35 cm | 35 cm | 37 cm |
| A-Frame length (D) | 120 cm | 120 cm | 120 cm | 120 cm |
| Total length (E) | 445 cm | 445 cm | 445 cm | 445 cm |
| Total width (F) | 215 cm | 215 cm | 215 cm | 215 cm |
| Total height (G) | 273 cm | 273 cm | 273 cm | 273 cm |
| Internal height (H) | 236 cm | 236 cm | 236 cm | 236 cm |

| Accessories | PTH 2000 Privaro | PTH 2000 Excelente | PTH 2000 Excelente | PTH 2300 Ganador |
|-------------------------------------|------------------|--------------------|--------------------|------------------|
| Spare wheel with support | v | v | v | s |
| Automatically retracting rear mesh | v | v | v | s |
| Automatically retracting rear cover | s | s | s | v |
| Axle shock absorbers | v | v | v | s |
| Head grid | v | v | v | v |
| Foal grid | v | v | v | v |
| Alloy wheels (195/70R14) | x | x | x | v |

s standard equipment v available as an accessory x no accessory



**“WE BOTH ARRIVE
STRESS-FREE ON OUR
DESTINATION”**



Anssems

Always behind you.

Anssems offers a complete range of transport solutions of flawless quality, and has been doing so since 1977. Our standard, richly equipped trailers are perfect for professional and private users. Our modern machinery is extremely accurate and ensures a consistent high-quality output. Our team checks the result to guarantee a perfect finish. We produce to the highest standards, with user comfort and safety being our top priority. Anssems, when things gets tough, we're right behind you.

Visit: www.anssems.eu



Your Anssems dealer

AB2302EN-PTH



Anssems

The Anssems group

Anssems Aanhangwagens B.V.
Ericssonstraat 50
NL-5121 ML Rijen

Anssems Anhänger GmbH
Londoner Straße 15
D-48455 Bad Bentheim-Gildehaus

Anssems Remorques Sarl
Rue Pierre Brossollette
FR-58600 Garchizy

Hulco Trailers GmbH
Wiener Straße 34
D-48455 Bad Bentheim-Gildehaus